



The B0028 Marine Loading Arm is designed especially to meet the needs of barge transfer and coastal tanker installations with minimal tidal variation.

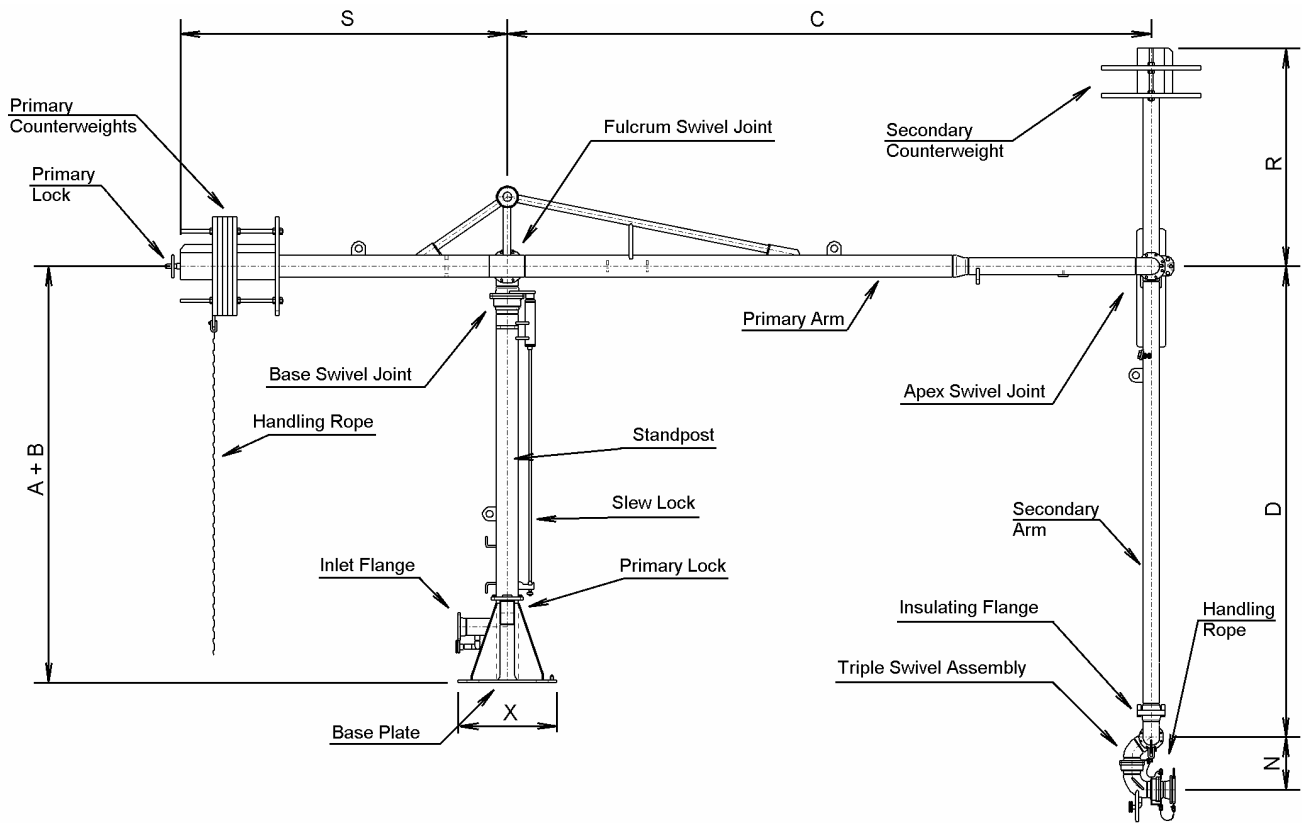
The B0028 Marine Loading Arm is a self supporting design, with inboard and outboard arms directly counterweight balanced for easy manual operation.

The B0028 is available

- ◆ in sizes 4" up to 10"
- ◆ for 150 lbs or 300 lbs pressure ratings
- ◆ in materials carbon steel, low temperature steel, stainless steel
- ◆ for all products transported by barges
- ◆ for temperature range -55 °F up to +390 °F
- ◆ manually operated
- ◆ with various accessories

For difficult/special applications we offer engineered solutions

The advantages in comparison with hose loading facilities are ease of handling, higher flexibility, less manpower and minimum maintenance, resulting in maximum operational safety and minimum cost of ownership.



### Marine Loading Arm B0028

#### TYPICAL DIMENSIONS, WEIGHTS AND OVERTURNING MOMENTS

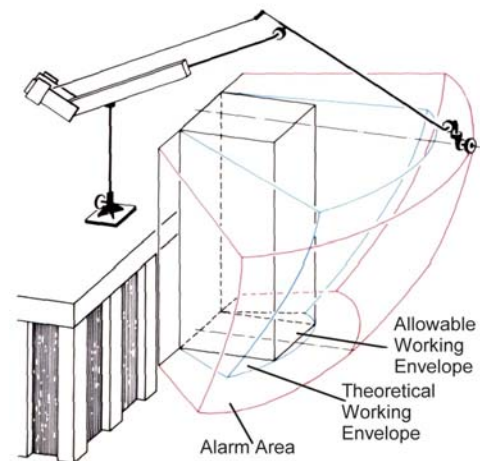
Size	Riser Height ft	X ft	C ft	D ft	N ft	S ft	Flow Rate gal/min	Weight lbs	Moment Lb ft
4"	13	4	18	18	2	10	1,320	9,000	48,600
6"	13	4	18	18	2	10	2,640	9,000	48,600
8"	13	4	21	21	2.4	10	4,850	12,800	67,400
10"	16	4	25	25	3	13	7,500	16,000	127,300

#### Design:

- ◆ Fully balanced with independent counterweights for inboard- and outboard arm
- ◆ self supporting system, providing lowest weight and bending moment for easy handling
- ◆ for transfer of all products, e.g. crude oil, chemicals, liquefied gases
- ◆ available in carbon steel, low temperature steel and stainless steel
- ◆ swivel joints either welded-in or flanged
- ◆ seals available in Buna-N, Viton, PTFE or any other specific material depending on application
- ◆ pressure rates of 150 lbs, 300 lbs or other international standards.
- ◆ Higher pressure rates are possible
- ◆ temperature range from -55 °F (e.g. LPG) to +390 °F (e.g. Bitumen)

#### Typical Accessories:

Vacuum Breaker	Drain Connections	Manual Quick Coupler
Nitrogen Purge Line	Range Overtravel Alarms	Static Insulating Flange



**EMCO WHEATON**  
A Gardner Denver Company

9111 Jackrabbit Road  
Houston, TX 77095 – USA  
Tel: (800) 324-2242  
Int'l: (281) 856-1300  
Fax: (281) 856-1325  
Email: [sales@emcowheaton.com](mailto:sales@emcowheaton.com)  
Web: [www.emcowheaton.com](http://www.emcowheaton.com)