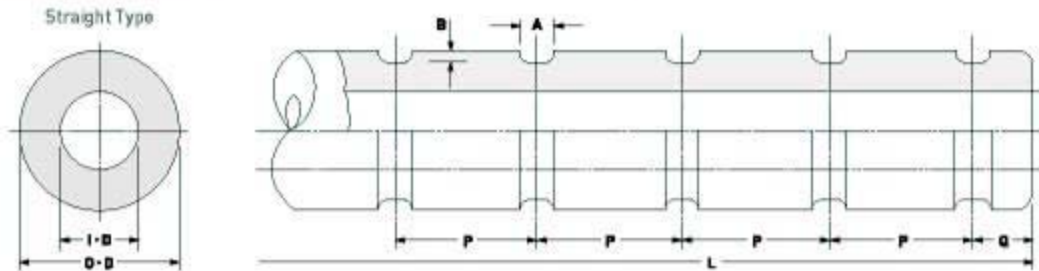


TYPE-CB FENDERS



Morse Rubber

Type CB Fender

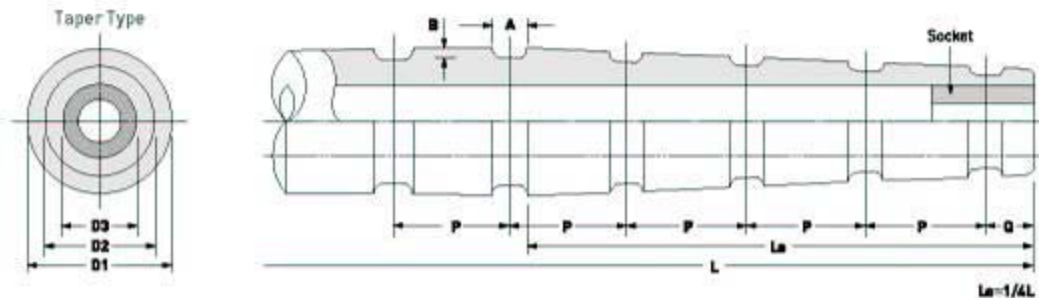


Fender Dimension (Use: For Side)

Size	100 ϕ \times 50 ϕ	150 ϕ \times 75 ϕ	200 ϕ \times 100 ϕ	250 ϕ \times 125 ϕ	300 ϕ \times 150 ϕ	350 ϕ \times 175 ϕ	400 ϕ \times 200 ϕ	500 ϕ \times 250 ϕ	600 ϕ \times 300 ϕ	700 ϕ \times 350 ϕ
O-D	100	150	200	250	300	350	400	500	600	700
I-D	50	75	100	125	150	175	200	250	300	350
A	30	30	50	50	50	70	70	70	85	85
B	10	10	15	15	15	20	20	30	30	40
P	600-900	600-900	600-900	600-900	600-900	600-900	600-900	600-900	600-900	600-900
Q	100	100	150	150	200	200	200	250	250	300

(Unit: mm)

* Maximum length available is 20m.



Fender Dimension (Use: For Bow and Stern)

Size	200 ϕ \times 100 ϕ	250 ϕ \times 125 ϕ	300 ϕ \times 150 ϕ	350 ϕ \times 175 ϕ	400 ϕ \times 200 ϕ	500 ϕ \times 250 ϕ	600 ϕ \times 300 ϕ	700 ϕ \times 350 ϕ	800 ϕ \times 400 ϕ
D1	200	250	300	350	400	500	600	700	800
D2	150	190	225	260	300	375	450	525	600
D3	100	125	150	175	200	250	300	350	400
A	50	50	50	70	70	70	85	85	85
B	15	15	15	20	20	30	30	40	40
P	600-900	600-900	600-900	600-900	600-900	600-900	600-900	600-900	600-900
Q	150	150	200	200	200	250	250	300	300
Socket	O-D	-	-	-	202	252	303	354	404
	I-D	-	-	-	100	100	150	150	150
	Length	-	-	-	300	350	400	400	400

(Unit: mm)

* Maximum length available is 20m.

Morse Rubber LLC

3588 Main Street - Keokuk, IA 52632 USA

TYPE-W FENDERS



Morse Rubber

TYPE-W BLOCK FENDERS

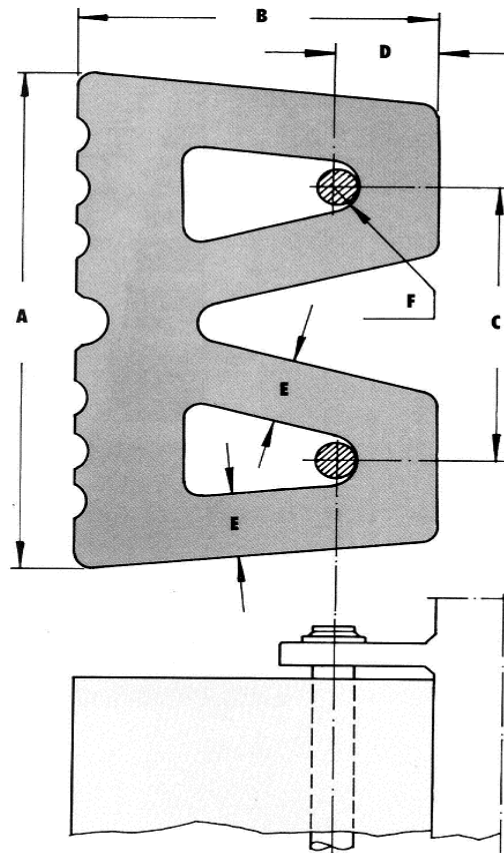
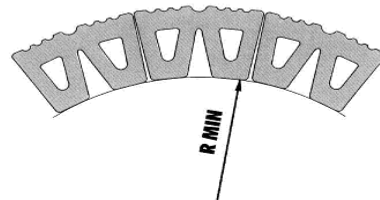
Morse Type-W Block Fenders are made of tough wear resistant synthetic rubber to withstand the most severe service. This modular fender system provides wide flexibility in design, allowing custom fit to hull curves and varying vertical coverage requirements.



BLOCKFENDER TYPE W

FENDER TYPE	DIMENSIONS IN MM							
	A	B	C	D	E	F	R MIN	Ø BAR
W-32-20	320	200	180	67	40	17	600	20
W-40-25	400	250	220	75	50	20	800	25
W-48-30	480	300	265	80	60	25	900	35

Additional sizes available per customer request.



Morse

KEYHOLE BLOCK FENDERS



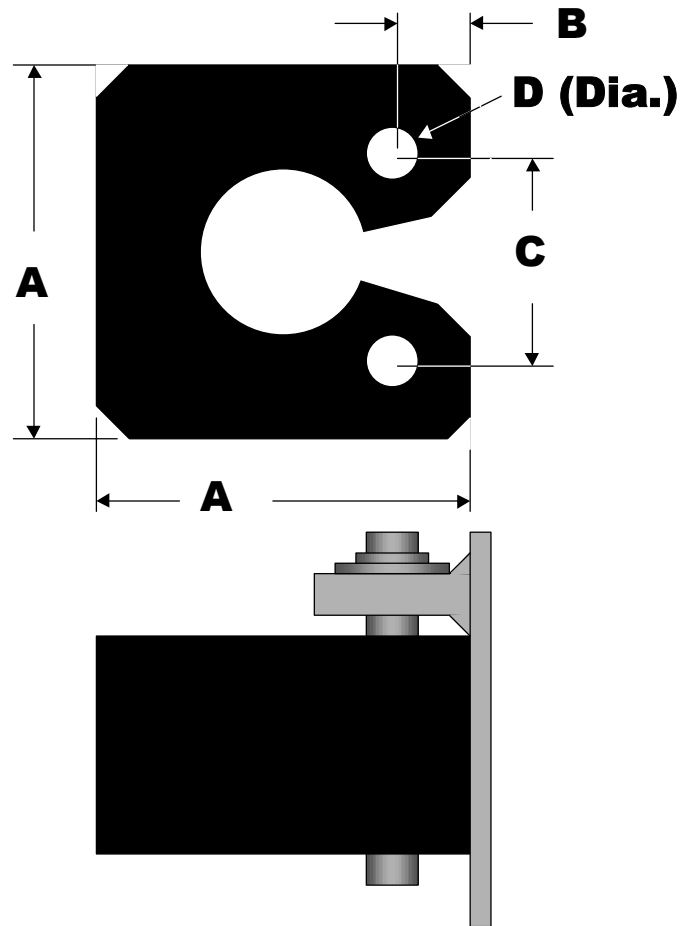
Morse Rubber

KEYHOLE BLOCK FENDERS

Trellex Keyhole Block Fenders are made of tough wear resistant synthetic rubber to withstand the most severe service.

The modular design provides wide flexibility in design, allowing custom fit to hull curves and varying vertical coverage requirements.

Type	Dimensions (mm)			
	A	B	C	D
8E	200	40	140	20
8A	250	50	150	20
8B	304	60	184	25
8C	350	70	210	25

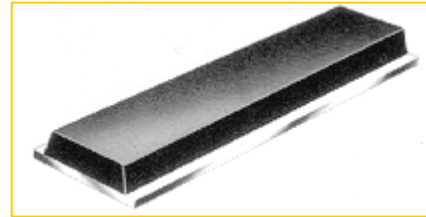


Morse Rubber LLC
 3588 Main St. Keokuk, IA 52632
 Tel: 319 524 8430 Fax: 319 524 7290

PushNee Bumpers and Modular Fenders

FLAT TYPE

Description	Part Number
10" x 36" - 3/4" Steel	E42000
10" x 36" - 1/2" Steel	E42010
10" x 36" - 1/4" Steel	E42004
10" x 48" - 3/4" Steel	E43000
10" x 48" - 1/2" Steel	E43010
10" x 48" - 1/4" Steel	E43004
13.5" x 36" - 3/4" Steel	E42005
13.5" x 36" - 1/2" Steel	E42041
13.5" x 36" - 1/4" Steel	E42042
20" x 36" - 3/4" Steel	E42002
20" x 36" - 1/2" Steel	E42034
20" x 36" - 1/4" Steel	E42035
20" x 48" - 3/4" Steel	E43002
20" x 48" - 1/2" Steel	E43034
20" x 48" - 1/4" Steel	E43035



CURVED TYPE

3/4" Steel	E42012
1/2" Steel	E42049
1/4" Steel	E42050



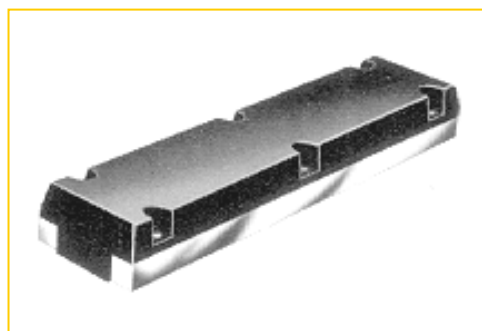
Morse Rubber LLC

3588 Main St. Keokuk, IA 52632 Tel: 319 524 8430 Fax: 319 524 7290

PushNee Bumpers and Modular Fenders

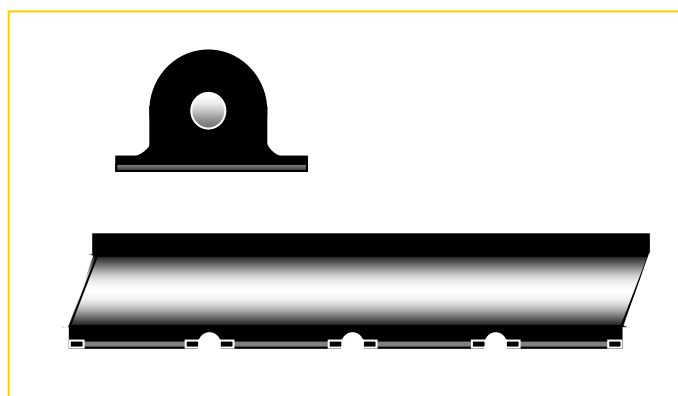
BOLT ON TYPE

Description	Part Number
8" x 36" With Bars	E42007
8" x 36" Without Bars	E42008
8" x 18" With Bars	E42011
8" x 18" Without Bars	E42013



MODULAR FENDERS

Description	Part Number
8" D-Shape - 4" Bore	E44300
8" D-Shape - 2" Bore	E44311
6" x 48" - 1/4" Steel	E47950
6" x 48" - 1/2" Steel	E47951
6" x 48" - 3/4" Steel	E47952
8" x 48" - 1/4" Steel	E47960
8" x 48" - 1/2" Steel	E47961
8" x 48" - 3/4" Steel	E47962
10" x 48" - 1/4" Steel	E47970
10" x 48" - 1/2" Steel	E47971
10" x 48" - 3/4" Steel	E47972



Morse Rubber LLC

3588 Main St. Keokuk, IA 52632 Tel: 319 524 8430 Fax: 319 524 7290